

# THE **SMOKELESS** BARBECUE EXPERIENCE

RETAIL INFORMATION 2017



**LOTUSGRILL®**  
THE SMOKELESS CHARCOAL GRILL







## THE COMPANY

LotusGrill Distribution was established in 2010 from renowned company Lotus during the development of the LotusGrill and is conducted ever since as independent company around constantly growing barbecue product palette.

The mother company Lotus has specialized in the last four decades in production of houseware products, kitchen items, cookware and barbecue utilities.

On the LotusGrill headquarters areal of approx. 3.000 sqm one finds offices, design studio, show room and warehouse. The stock has a maximum capacity of 16.000 barbecue devices beside accessoires and has an ground level entrance for overseas containers. A total of 12 persons are working for LotusGrill, trend rising.

Since start of sales LotusGrill has expanded meanwhile into the most continents.

# THE INNOVATION

## Simple idea. Big effect.

The LotusGrill has a built-in, battery-operated fan, which supplies the charcoal with air. As such, the charcoal is permanently well-aerated, which means the BBQ can be lit without virtually any smoke. The BBQ is ready to use in just 3-4 minutes. Precise temperature control is possible thanks to the switch, which allows the fan to be infinitely adjusted. The more air blown into the charcoal, the hotter it burns.

Flying sparks or escaping embers are reduced to a minimum as combustion takes place in a closed container inside the BBQ. The double-walled construction of the LotusGrill combined with the closed charcoal container and lockable grill grid guarantee a safe and fun BBQ experience. Any grease dripping from the food is guided via the stainless steel plate in the middle of the grill grid and collected in the inner bowl of the LotusGrill and therefore does not come into contact with the charcoal.

This reduces the amount of smoke which the BBQ produces to a minimum. The LotusGrill now allows the BBQ master to finally barbecue right where the others are

eating, so he or she can enjoy the party instead of standing off to the side. The BBQ can be completely disassembled after use and is easy to clean. A specially-developed, extensive set of accessories rounds off the LotusGrill's product range. The LotusGrill is the fun, fast and safe way to barbecue.

To ensure the best possible results and minimal smoke, we recommend using the LotusGrill safety fuel gel and LotusGrill beech charcoal.

The LotusGrill G340 model has already received multiple prestigious awards.



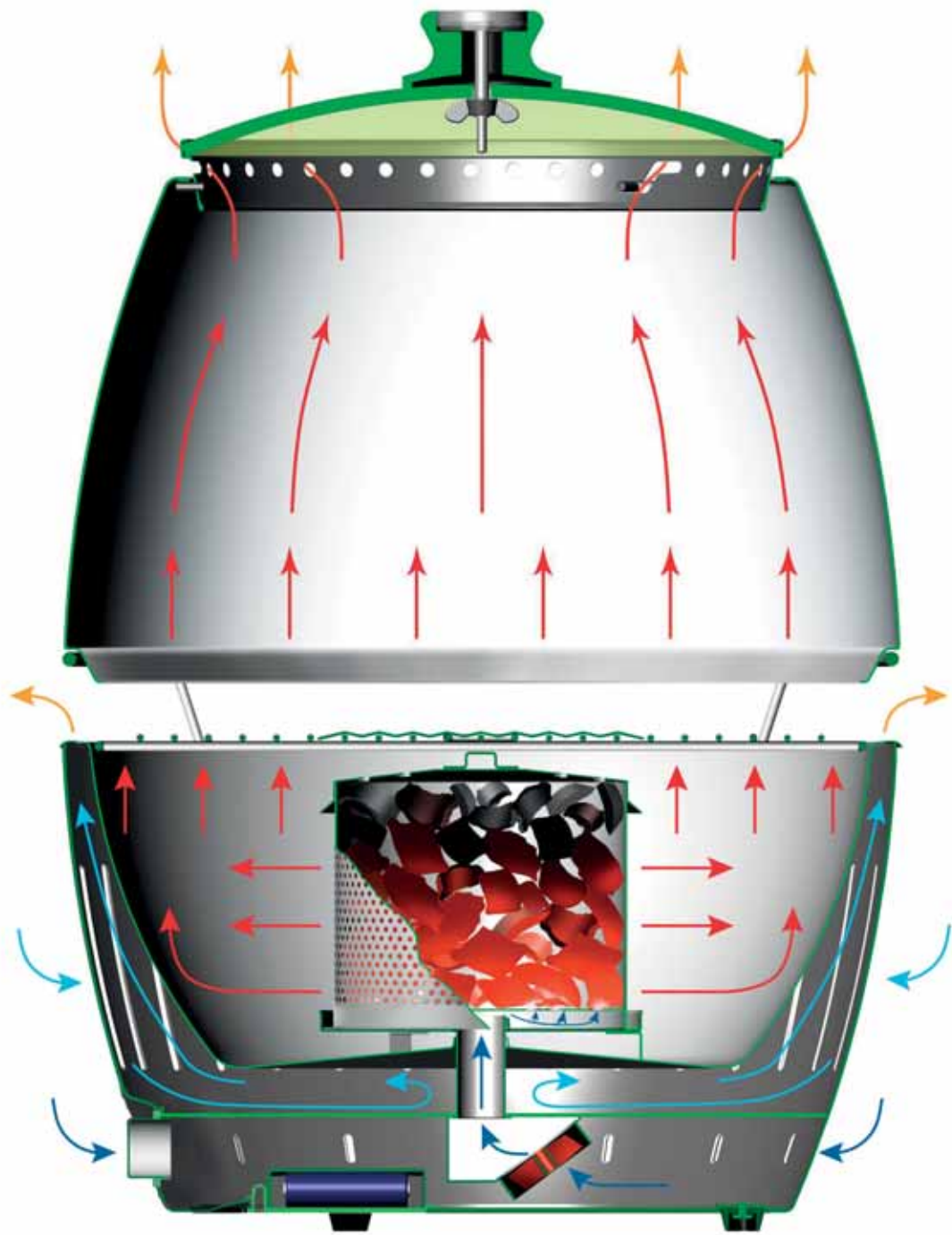
reddot design award  
winner 2013



DESIGN PLUS  
2013



2014



# THE LOTUSGRILL

The LotusGrill is round with a conical shape towards the bottom. It weighs less than 4 kilograms and comes with a colour coded nylon carrier bag. The grill grid has a diameter of 32 cms and is ideal for up to 5 people. The grid and inner bowl are made of stainless steel and are dishwasher safe. It's built-in fan is run by 4 AA batteries and can be adjusted by an LED-lit switch.

The closed, perforated stainless charcoal container with its lid is located in the centre of the inner bowl. It holds up to 200 grams of charcoal and can be ignited with standard lighter gel. Depending on the charcoal used (we recommend the optimized LotusGrill Beech-BBQ-Charcoal) and the fan setting the LotusGrill will cook for between 40 and 60 minutes.

The outer bowl is made of powder-coated steel which never gets hot during use. Two latches connect the grid, outer and inner bowl as well the charcoal container securely into a single and safe unit. (GS tested)

The LotusGrill is a unique table barbeque – even if knocked over, no embers or coal can escape from its container.

## TECHNICAL DATA

### Weight

approx. 3,7 kg

### Measurements

top diameter 350 mm

bottom diameter 260 mm

height 234 mm

grid diameter 320 mm

### Material

Steel and shock-resistant plastics.

Grid, inner bowl, charcoal container and latches: stainless steel.

### Included in delivery

grill (ready-to-use)

carrying bag

4 AA batteries

manual



Grill grid



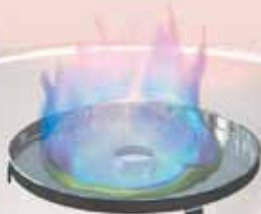
Cover for Charcoal Container



Charcoal Container



Ignition Plate

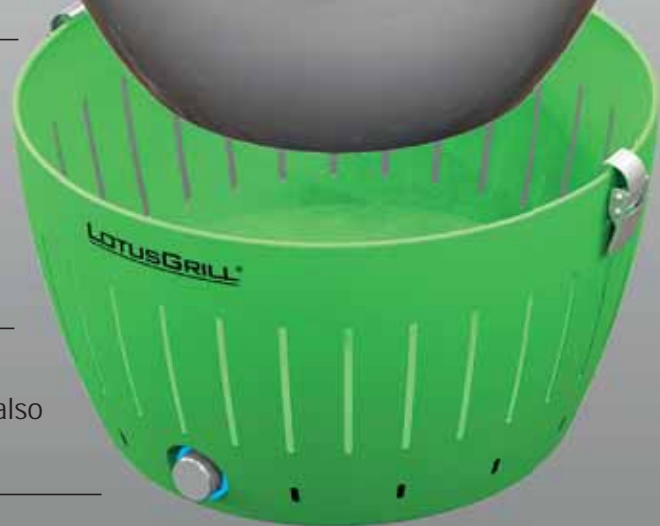


Inner Bowl



Latches

Outer bowl with built-in, battery-powered fan



On/off switch, which also works as an infinitely heat control

# PRODUCT INFORMATION

<b>Article</b>	<b>P./B.</b>	<b>P./Pal.</b>	<b>Article-no.</b>	<b>EAN-Code</b>
LotusGrill Lime Green	1	36	G-GR-34	4260023019946
LotusGrill Blazing Red	1	36	G-RO-34	4260023019915
LotusGrill Deep Blue	1	36	G-TB-34	4260023019861
LotusGrill Anthracite Grey	1	36	G-AN-34	4260023019939
LotusGrill Plum Purple	1	36	G-LI-34	4260023019922
LotusGrill Mandarin Orange	1	36	G-OR-34	4260023019953
LotusGrill Stainless Steel	1	36	G-SS-34	4260023019991

**Special colors available on request, minimum order quantity 1.000 units.**



**P./B.** = Pieces per Box   **P./Pal.** = Pieces per Pallet





LotusGrill Lime Green



LotusGrill Blazing Red



LotusGrill Deep Blue



LotusGrill Anthracite Grey



LotusGrill Plum Purple



LotusGrill Mandarin Orange



LotusGrill Stainless Steel

# THE LOTUSGRILL XL

## Same idea, bigger effect.

The LotusGrill XL is the big brother of our bestseller model G340 and follows the same principle. Almost identical in height, the LotusGrill XL has a significantly larger diameter. The grill grid has almost double the surface of the smaller brother. The LotusGrill XL holds food for up to 10 person, using only 400 grams charcoal charcoal (we recommend LotusGrill Beech Charcoal). A variety of specially developed accessories complete the barbecue experience. The LotusGrill XL is a further highlight in our steadily growing product family.

A matching grill hood with see-through panel and built-in thermometer convert the LotusGrill into a perfect stove.

The temperature can be regulated infinitely and this makes it possible to refine the grill good in low temperature heat.

## TECHNICAL DATA

### Weight

approx. 6,5 kg

### Measurements

top diameter 435 mm

bottom diameter 350 mm

height 257 mm

grid diameter 405 mm

### Material

Steel and shock-resistant plastics  
grid, inner bowl, charcoal container  
and latches: stainless steel.

### Included in delivery

grill (ready-to-use)

carrying bag

4 AA batteries

manual

Grill hood with safety glass lid, adjustable ventilation slots and integrated thermometer. The grill hood is perfect for baking, refining, holding warm, roasting and low temperature barbecue.

Pizza Stone Set in combination with the grill hood converts LotusGrill to the most flexible pizza stove of the world. Through the glass lid one can always control when the pizza is ready.

LotusGrill XL  
This combination naturally available also for the small brother G340 .



# PRODUCT INFORMATION

<b>Article</b>	<b>P./B.</b>	<b>P./Pal.</b>	<b>Article-no.</b>	<b>EAN-Code</b>
LotusGrill XL Lime Green	1	24	G-GR-435	4260023010066
LotusGrill XL Blazing Red	1	24	G-RO-435	4260023010097
LotusGrill XL Deep Blue	1	24	G-TB-435	4260023019878
LotusGrill XL Anthracite Grey	1	24	G-AN-435	4260023010059
LotusGrill XL Plum Purple	1	24	G-LI-435	4260023010073
LotusGrill XL Mandarin Orange	1	24	G-OR-435	4260023010080

**P./B.** = Pieces per Box **P./Pal.** = Pieces per Pallet



LotusGrill XL Lime Green



LotusGrill XL Blazing Red



LotusGrill XL Deep Blue



LotusGrill XL Anthracite Grey



LotusGrill XL Plum Purple



LotusGrill XL Mandarin Orange

# THE LOTUSGRILL **XXL**

## **The quick and safe way to barbecue - now available also as XXL Version**

The LotusGrill XXL has two built-in, battery-operated fans, which supply the charcoal with air. As such, the charcoal is permanently well-aerated in the two individual charcoal containers, which means the BBQ can be lit without virtually any smoke. The BBQ is ready to use in just 5 minutes. Precise temperature control of the charcoal containers is possible thanks to the two switches, which allow the fans to be infinitely adjusted. The more air blown into the charcoal, the hotter it burns. Flying sparks or escaping embers are reduced to a minimum as combustion takes place in a closed container inside the BBQ.

The double-walled construction of the LotusGrill combined with the closed charcoal containers and lockable grill grid guarantee a safe and fun BBQ experience. Any grease dripping from the food is guided via the stainless steel plate in the middle of the grill grid and collected in the inner bowl of the LotusGrill XXL and therefore does not come into contact with the charcoal. This reduces the amount of smoke which the BBQ produces to a minimum.

The LotusGrill XXL now allows the BBQ master to finally barbecue right where the others are eating, so he or she can enjoy the party instead of standing off to the side. The BBQ can be completely disassembled after use and is easy to clean. A specially-developed, extensive set of accessories rounds off the LotusGrill

XXL's product range. The LotusGrill XXL is the fun, fast and safe way to barbecue. To ensure the best possible results and minimal smoke, we recommend using the LotusGrill safety fuel gel and LotusGrill beech BBQ-charcoal.

## **TECHNICAL DATA**

### **Weight**

ca. 21,8 kg

### **Measurements**

top diameter 600 mm

bottom diameter 488 mm

height 284 mm

grid diameter 576 mm

### **Material**

Outer bowl: Powder-coated steel

Base: Impact-resistant plastic (ABS)

Handle, grill grid, inner bowl, charcoal

container, ignition plate and latches:

Stainless steel

Grill cart: Powder-coated steel

Wheels: Impact-resistant plastic

### **Included in product**

1 x LotusGrill XXL

1 x grill cart

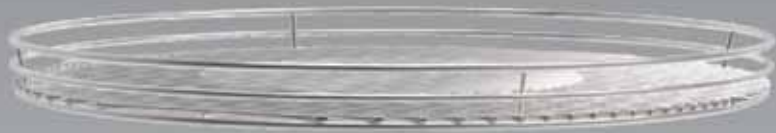
4 x AA batteries (1.5V)

1 x power adapter

1 x Assembly and

1 x Instruction Manual

Grill Grid



Charcoal Container Cover



Charcoal Container  
left

Charcoal Container  
right

Ignition Plate



2 air-outlets  
per container



Grill Grid  
latch

thermally isolated  
outer bowl

2 control dials  
for temperature  
adjustment

Operation optionally  
either with batteries or  
power adapter

Grill Cart

Tilt adjustment



# PRODUCT INFORMATION

Article	P./B.	P./Pal.	Article-no.	EAN-Code
LotusGrill XXL Lime Green	1	12	G-GR-600	4260023017461
LotusGrill XXL Blazing Red	1	12	G-RO-600	4260023017393
LotusGrill XXL Deep Blue	1	12	G-TB-600	4260023017454
LotusGrill XXL Anthracite Grey	1	12	G-AN-600	4260023017379
LotusGrill XXL Plum Purple	1	12	G-LI-600	4260023017447
LotusGrill XXL Mandarine Orange	1	12	G-OR-600	4260023017478

**P./B.** = Pieces per Box    **P./Pal.** = Pieces per Pallet



LotusGrill XXL Lime Green



LotusGrill XXL Blazing Red





LotusGrill XXL Deep Blue



LotusGrill XXL Anthracite Grey



LotusGrill XXL Plum Purple



LotusGrill XXL Mandarin Orange

# GRILL HOOD XXL

Article	P./B.	P./Pal.	Article-no.	EAN-Code
Grill Hood XXL			DK-AN-600	4260023010226

Grill hood with safety glass lid, integrated thermometer and stainless steel handle. The massive hinge ensures a precise fit of the hood and grill grid. The grill hood is perfect for baking, refining, holding warm, roasting and low temperature barbecue.



Stabile hinge for precise function.



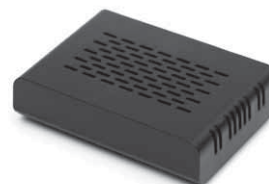
Grill hood easy to remove.

# AUTOMATIC TEMPERATURE CONTROL

Article	P./B.	P./Pal.	Article-no.	EAN-Code
Automatic Temperature Control			G-ATS-SET	4260023010219

The latest innovation for LotusGrill charcoal BBQs with grill hood: The Automatic Temperature Control (ATS). The set contains three components: Sensor unit, remote control and control unit. The desired bbq temperature is set with the remote control. As soon as the sensor unit, which sits on top of the hood, reports the set temperature per blue-tooth, the control unit drives the fan(s) down. If the temperature inside the hood falls under set value, the fan(s) is/are activated again, until the set temperature is reached.

The set is compatible with all LotusGrill grill hood models.



# ACCESSORIES



Article	P./B.	P./Pal.	Article-no.	EAN-Code
LotusGrill Fondue-Set			FG-SET	4260023010417
Glas Hood	6		DK-GH-34	4260023019816
Grillhood	1	36	DK-AN-34	4260023010103
Grillhood XL	1	24	DK-AN-435	4260023010110
Barbecue-Teppanyaki Plate	5		TP-AL-290	4260023019854
Pizza Stone Set	5		PZ-SET-290	4260023010165
Pizza Stone Set XL	5		PZ-SET-380	4260023018727
Keep-fresh bowls, 3pc-Set			FH-SS-SET	4260023017409
LotusGrill Cleaner for BBQ and Oven	12	720	L-R-750	4260023019977
Barbeque Bag, Wallet à 8 Bags	12		GB-AL-M	4260023017010
Lighter Gel	20	1600	BP-L-200	4260023011841
Beech Charcoal 1 kg		272	LK-1000	4260023019984
Beech Charcoal 1 kg, Carton		216	LK-1000-B	4260023019885
Beech Charcoal 2,5 kg		120	LK-2500	4260023010400
Marinade Brush Lime Green	10/100		P-GR-22	4260023011742
Marinade Brush Blazing Red	10/100		P-RO-22	4260023011865
Marinade Brush Deep Blue	10/100		P-TB-22	4260023011773
Marinade Brush Anthracite Grey	10/100		P-AN-22	4260023011704
Marinade Brush Plum Purple	10/100		P-LI-22	4260023011735
Marinade Brush Mandarin Orange	10/100		P-OR-22	4260023011759
Barbecue Tongs Lime Green	5/50		GZ-GR-33	4260023011834
Barbecue Tongs Blazing Red	5/50		GZ-RO-33	4260023011964
Barbecue Tongs Deep Blue	5/50		GZ-TB-33	4260023011810
Barbecue Tongs Anthracite Grey	5/50		GZ-AN-33	4260023011926
Barbecue Tongs Plum Purple	5/50		GZ-LI-33	4260023011827
Barbecue Tongs Mandarin Orange	5/50		GZ-OR-33	4260023011940
Potholder round Lime Green	10/100		U-GR-R	4260023016082
Potholder round Blazing Red	10/100		U-RO-R	4260023016105
Potholder round Deep Blue	10/100		U-TB-R	4260023016112
Potholder round Anthracite	10/100		U-AN-R	4260023016075
Potholder round Plum Purple	10/100		U-LI-R	4260023016099
Potholder round Mandarine Orange	10/100		U-OR-R	4260023016129
Potholder square Lime Green	10/100		U-GR-Q	4260023 016174
Potholder square Blazing Red	10/100		U-RO-Q	4260023 016204
Potholder square Deep Blue	10/100		U-TB-Q	4260023016235
Potholder square Anthracite	10/100		U-AN-Q	4260023 016167
Potholder square Plum Purple	10/100		U-LI-Q	4260023 016181
Potholder square Mandarine Orange	10/100		U-OR-Q	4260023 016211

**P./B.** = Pieces per Box **P./Pal.** = Pieces per Pallet



LotusGrill Fondue-Insert



Glass Hood



Grill Hood



Grillhood XL



Barbecue-Teppanyaki Plate



Pizza Stone Set / Pizza Stone Set XL



Keep-fresh bowls, 3pc-Set



Cleaner for BBQ and Oven



Barbeque Bag



Lighter Gel



Beech Charcoal 1 kg



Beech Charcoal 1 kg, Karton



Beech Charcoal 2,5 kg



Brush Lime Green



Brush Blazing Red



Brush Deep blue



Brush Anthracite Grey



Brush Plum Purple



Brush Mandarin Orange



Barbecue Tongs Lime Green



Barbecue Tongs Blazing Red



Barbecue Tongs Deep blue



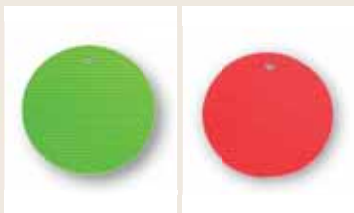
Barbecue Tongs Anthracite Grey



Barbecue Tongs Plum Purple



Barbecue Tongs Mandarin Orange



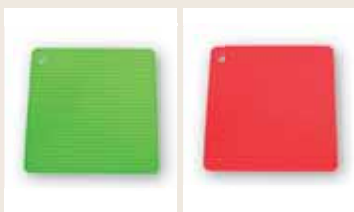
Potholder round  
Lime Green Blazing Red



Potholder round  
Deep blue Anthracite



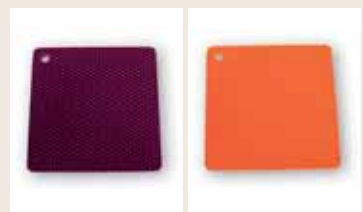
Potholder round  
Plum Purple Mandarin Orange



Potholder square  
Lime Green Blazing Red



Potholder square  
Deep blue Anthracite



Potholder square  
Plum Purple Mandarin Orange

# REPLACEMENT PARTS

Article	P./B.	P./Pal.	Article-no.	EAN-Code
Carrying Bag			T-AN-34	4260023010332
Carrying Bag XL			T-AN-435	4260023018802
Charcoal Container			G-HB3-D115	4260023017263
Charcoal Container XL			G-HB3-D180	4260023017270
Charcoal Container XXL			G-HB3-DK	4260023010233
Grill Grid			G-ER-34	4260023011971
Grill Grid XL			G-ER-435	4260023010028
Grill Grid XXL			G-ER-600	4260023010004
Inner Bowl			G-EI-34	4260023011988
Inner Bowl XL			G-EI-435	4260023010035
Inner Bowl XXL			G-EI-600	4260023010127

**P./B.** = Pieces per Box    **P./Pal.** = Pieces per Pallet



Carrying Bag



Carrying Bag XL



Charcoal Container



Grill Grid



Inner Bowl



Charcoal Container XL



Grill Grid XL



Inner Bowl XL



# LOTUSGRILL STAND SET

Article	P./B.	P./Pal.	Article-no.	EAN-Code
Stand Set			ST-AN-SET	4260023017737

Set contains two tablets, for models G340 and G435 (XL).  
Height 650 mm.



# SALES PROMOTION MATERIAL

Article	P./B.	P./Pal.	Article-no.	EAN-Code
Display			DI-AN-34	4260023017287
Display, small			DI-DP-5	4260023010486

Premium sales display made of solid-colored MDF with space for 18 pcs LotusGrill G340 and various accessories. Requires one Euro-Palette (not incl.) as base.

Dimensions: approx. 820 x 1220 x 1800 mm  
(without items)

Now available also in compact size.

Dimensions: approx. 800 x 600 x 1550 mm  
(without items)



## Legal Note

### Manufacturer/Import/Export:

LotusGrill GmbH  
Rheingönheimer Weg 3-5  
67117 Limburgerhof  
Germany

Phone +49(0)6236 - 461805

Fax +49(0)6236 - 8440

[contact@lotusgrill.de](mailto:contact@lotusgrill.de)

[www.lotusgrill.de](http://www.lotusgrill.de)

[www.twitter.com/lotusgrill](https://www.twitter.com/lotusgrill)

[www.facebook.com/lotusgrill](https://www.facebook.com/lotusgrill)



All rights reserved. Subject to modifications and amendments.  
February 2017





**LOTUSGRILL®**  
THE SMOKELESS CHARCOAL GRILL

